

# Combined Sewer Overflow Long-Term Control Plan

for the

## City of Terre Haute

Vigo, Indiana

Prepared by:



3050 Poplar Street, Suite B, Terre Haute, Indiana 47803 • (812)-234-2551

## Executive Summary

### Introduction

The City of Terre Haute has developed a Combined Sewer Overflow Long-Term Control Plan (CSO LTCP), which describes the measures they will take to reduce the combined sewer overflows and improve water quality in the Wabash River in the City of Terre Haute. The LTCP will be reviewed by the Indiana Department of Environmental Management (IDEM) and once approved will be incorporated into a new National Pollution Discharge Elimination System (NPDES) permit.

Currently *ten* combined sewer overflows are active in the Terre Haute area and 100% of those outfalls discharge into the Wabash River. Flow, water quality and rainfall data was collected and both the combined sewer system and the Wabash River in the CSO areas was modeled to assist in the planning process. No areas were qualified as “sensitive areas” but the outfalls around Fairbanks Park were to be given priority. A CSO LTCP will be recommended to reduce the number of CSO events per year (average year) from 37 to 7 times per year, which will reduce the number of hours when bacteria loadings from the CSO’s exceed recommended levels in the river by 75%, from 174 hours to 45 hours at the wastewater treatment plant.

Many regulatory requirements were considered in the City of Terre Haute’s LTCP. Both Federal and State CSO policies are divided into two phases. Phase I (CSO Operational Plan) was submitted to IDEM and approved by IDEM in 2006. Phase II represents the submittal of this document. All of the regulatory requirements are intended to reduce the in-stream impact from CSO discharges during wet conditions and ultimately make the Wabash River more “fishable and swimmable” (CWA, 1972).

The City of Terre Haute’s LTCP was developed with IDEM’s assistance. Several key issues specific to Terre Haute were evaluated as described in Section 1.3. The project team consisted of two separate groups. The first group included engineering and financial consultants; the second group was a technical review committee which included members of the City Engineering and WWTP Staff.

The groups worked together to establish project goals specific to the City of Terre Haute. The work was carried out over two year period and a plan was completed and submitted to IDEM by the deadline. All of the key decision-making involved input from members of the team.

## Existing Conditions

The City of Terre Haute's combined sewer system has approximately 5,100 acres that discharge through 10 combined sewer overflow points along the Wabash River. The most upstream combined sewer overflow (CSO) discharge point is at River Mile 215 and the wastewater treatment plant discharge is at River Mile 210. Figure ES-1 shows the location of the CSOs and the boundary of the combined sewer area.

The interceptor sewer collects the dry weather flow and a portion of the wet weather flows from each CSO and conveys it to the 48 MGD main lift station. The main lift station (*which has an emergency overflow at 002*) pumps the flow to the wastewater treatment plant that has an existing primary treatment and disinfection peak flow capacity of 48 MGD and a secondary treatment peak flow capacity of 36 MGD, although only a flow of 31 MGD can be currently sustained through the plant due to a series of hydraulic bottlenecks that limit the process performance at high flows. These bottlenecks limit the ability to transmit greater flow volumes from the combined sewer area and results in more combined sewer overflows of greater duration and flow volume.

In an average year, a continuous simulation of the collection system model simulates that 284 million gallons of combined sewage is discharged from these CSOs. Terre Haute is fortunate in that the receiving stream has a large average flow rate relative to the volume of CSO overflow, which can provide significant assimilative capacity. Despite this fact, simulations indicate that in an average year, the Wabash River exceeds the water quality standards for *E. coli* approximately 30% of the time during the recreation season (April-October) when bacteria loads from all pollutant sources are considered and less than 5% of the time if non-CSO sources effects are eliminated.

Terre Haute has an important public park, Fairbanks Park, located in the center of the city that has a boat launch. There are 4 CSOs that discharge in the park. Special attention was given to these particular CSOs (005, 006, 007 and 008).

## Consideration of Sensitive Areas

Both IDEM and EPA guidelines require determination of any "sensitive areas" within the CSO outfall areas and farther downstream. Any areas deemed sensitive would be given the highest priority for CSO reduction, elimination or control.

The sensitive areas were evaluated based on several criteria including: Habitats for Threatened or Endangered Wildlife, Primary Contact Recreational Areas, Drinking Water Sources and Outstanding State Resource Waters or Outstanding Natural Resource Waters. None of the areas within the CSO outfalls or downstream were found to be “sensitive” areas. The Citizens Action Committee did prioritize the areas around Fairbanks Park for the LTCP.

## Evaluation of Alternatives

A variety of CSO capture alternatives were considered in the LTCP including:

- No Action
- System-wide Separation
- Storage (inline, tanks, earthen, tunnel)
- Conveyance (open cut gravity sewer, tunnel)
- High Rate Treatment

These technologies were screened and then evaluated with consideration for initial costs, annual operation and maintenance costs, ease of implementation, environmental impacts, primary and secondary impacts and local affordability. Two factors weighed into consideration for three final alternatives that were evaluated in greater detail. The first factor was the purchase of the International Paper site by the City of Terre Haute and which includes several large earthen ponds located adjacent to the City’s main combined sewer pumping station in 2010. The second factor was the City’s decision to significantly increase the peak, sustained wet weather treatment capacity at the WWTF from 30 to 36 MGD up to 48 MGD. These two developments were used in consideration of the final alternatives set aside for detailed evaluation.

One final alternative evaluated was a CSO tunnel (approximately 40 feet deep) connecting all of the CSO outfalls to a new main lift station and utilization of the IP site (approximately 30 MG) for storage. The other final alternatives included construction of a large diameter open cut gravity interceptor from Fairbanks Park (consolidating and closing all of the outfalls within the park) and using the IP site for storage of CSO flows. One of the alternatives included consolidation of the northern two CSO outfalls and storage and a new main lift station to replace the City’s existing aging lift station (*which would eliminate outfall 002*). This alternative also suggested the use of green infrastructure within the basins 009 and 010 to capture flow before entering the combined system.

## **Public Participation**

Public Participation is an IDEM requirement for completing the City of Terre Haute CSO LTCP. The public was involved in many ways including both City government officials and private citizens. Several City government divisions including the City Council, the Board of Public Works and Safety, the Terre Haute Sanitary District Board of Commissioners and the Terre Haute Wastewater Treatment Plant were brought into the LTCP.

Perhaps the most important public participation came from the Citizen's Advisory Committee (CAC). A series of meetings were held with the CAC over a 10 year period to explain the process of determining alternatives for control and to garner input throughout the project.

Public Education was handled through various means. The CAC helped to educate the public at its meetings and through various meetings its members attended. A brochure outlining Terre Haute's plans was distributed and several newspaper articles were published in the local newspaper. Warning signs were installed at all of the outfall structures to provide information about potential health risks associated with structure overflows. A website was created to educate the public on the issues that CSOs cause and what the City is doing to rectify the problems associated with them.

A community notification program will be required by IDEM. This typically involves additional signage in prominent areas of the Wabash River and also notification if an overflow event is occurring or will occur within 24 hours. All notifications would be documented and submitted to IDEM.

The current volume of CSO discharges impairs the water quality in the Wabash River during CSO events and for several days afterwards. The recommended plan for the LTCP can be developed and implemented in phases and each phase will act to reduce the CSO volumes discharged to the Wabash River to some degree. The results of each phase will be monitored and those results will be used in the design and implementation of the future phases.

## **Financial Capability Assessment and Implementation Schedule**

Funding of a LTCP is perhaps the greatest challenge in developing the plan. The goal in funding is to determine the level of control that the community can provide without causing undue hardship on the City or on the individual households within the community. The guidelines consider the ability to contribute financially of both residents, and the City, to help determine the schedule implementation

length for the plan. The recommended plan is not the most or least expensive of the three final alternatives considered for implementation.

## **Recommended Plan**

After reviewing the environmental performance, cost-effectiveness and affordability, operability, reliability, and constructability, a recommended plan was developed that reduces CSO volume discharging to the river by 72%, results in 96% capture of wet weather flow, eliminates the CSOs in Fairbanks Park and results in no more than seven overflows in a typical year at the remaining CSOs. The recommended plan will utilize a combination of greater wet weather treatment capacity at the City's wastewater treatment facility, a large CSO storage facility at the former International Paper (IP) Brownfield site, a new main pump station to replace the existing facility constructed in 1965, a new large diameter CSO gravity sewer interceptor along the Wabash River between Fairbanks Park and the new main lift station and either "gray" or "green" CSO storage facilities at the north end of the CSO system. *Eight* of the *ten* existing CSO outfalls will be closed off completely. The recommended plan is shown in Figure ES-2. The estimated cost of the recommended plan is \$120 million and the recommended implementation schedule for the plan is 25 years.

## **Compliance Monitoring Plan**

A post-construction monitoring program will be implemented upon approval of the LTCP and submitted to IDEM prior to implementation of the LTCP. The program will measure reduction of combined sewer overflows and improvements to river quality. The City will conduct periodic reviews, not less than every five years after approval of the LTCP, to determine if the CSO control goals are being met. CSO control will be modified to meet the goals.

## Table of Contents

<b>EXECUTIVE SUMMARY .....</b>	<b>1</b>
INTRODUCTION .....	1
EXISTING CONDITIONS.....	2
CONSIDERATION OF SENSITIVE AREAS .....	2
EVALUATION OF ALTERNATIVES .....	3
PUBLIC PARTICIPATION.....	4
FINANCIAL CAPABILITY ASSESSMENT AND IMPLEMENTATION SCHEDULE.....	4
RECOMMENDED PLAN .....	5
COMPLIANCE MONITORING PLAN.....	5
<b>1 SECTION ONE – PURPOSE AND INTENT OF CSO LTCP .....</b>	<b>1-1</b>
1.1 PROJECT OVERVIEW.....	1-1
1.1.1 Background Information.....	1-1
1.2 REGULATORY REQUIREMENTS.....	1-1
1.2.1 Water Quality Standards.....	1-1
1.2.2 NPDES Permit Requirements .....	1-2
1.2.3 City of Terre Haute NPDES Permit.....	1-3
1.2.4 Senate Bill 431 and LTCP Guidance .....	1-4
1.2.5 Updated IDEM Policy Requirements (Current Standards - 2006).....	1-5
1.2.6 Use Attainability Analysis.....	1-6
1.3 PROJECT APPROACH.....	1-7
1.3.1 Project Team .....	1-8
1.3.2 Project Goals.....	1-9
1.3.3 Project Work Plan .....	1-10
<b>2 SECTION TWO – CURRENT CONDITIONS .....</b>	<b>2-1</b>
2.1 INTRODUCTION .....	2-1
2.2 WABASH RIVER WATERSHED.....	2-1
2.2.1 Terre Haute River Basin.....	2-5
2.3 CSS DESCRIPTION.....	2-8
2.3.1 Combined Sewer System Description .....	2-8
2.3.2 Combined Sewer Service Areas .....	2-8
2.3.2.1 Spruce Street.....	2-9
2.3.2.2 Chestnut Street.....	2-9

2.3.2.3	Ohio Street .....	2-9
2.3.2.4	Walnut Street .....	2-10
2.3.2.5	Oak and Crawford Streets .....	2-10
2.3.2.6	Hulman and Idaho Streets .....	2-10
2.3.2.7	Turner Street .....	2-11
2.3.2.8	Main Lift Station .....	2-11
2.3.3	Trunk Sewer & Interceptor Network .....	2-11
2.3.4	Wastewater Treatment Plant Facilities .....	2-14
2.3.4.1	Main Lift Station .....	2-18
2.3.4.2	Preliminary Treatment .....	2-19
2.3.4.3	Primary Treatment .....	2-19
2.3.4.4	Administration and Control Building .....	2-20
2.3.4.5	Secondary Treatment .....	2-20
2.3.4.6	Biosolids .....	2-21
2.3.4.7	Flow Equalization Basins .....	2-21
2.3.4.8	WWTF Expansion – Phase I .....	2-21
2.3.4.9	Summary .....	2-22
2.3.5	Implementation of Nine Minimum Controls .....	2-22
2.4	RECEIVING STREAM WATER QUALITY .....	2-24
2.4.1	Receiving Stream Water Quality Data Sources .....	2-25
2.4.1.1	Historical Water Quality Data .....	2-25
2.4.1.2	City of Terre Haute Wet Weather Sampling Program .....	2-25
2.4.2	Effects of CSOs on Water Quality .....	2-27
2.4.2.1	E. coli .....	2-27
2.4.2.2	Dissolved Oxygen .....	2-30
2.4.2.3	Metals .....	2-32
2.4.2.4	Total Suspended Solids .....	2-33
2.4.2.5	Conclusions .....	2-35
2.5	SENSITIVE AREAS .....	2-35
2.5.1	Consideration of Sensitive Areas .....	2-35
2.5.1.1	Habitat for Threatened or Endangered Species .....	2-36
2.5.1.2	Primary Contact Recreational Areas .....	2-36
2.5.1.3	Drinking Water Source Waters .....	2-37
2.5.1.4	Outstanding State Resource Waters .....	2-37
2.5.2	Sensitive Area Assessment .....	2-37
2.5.3	Identification of Areas to be Further considered .....	2-37
2.6	HISTORICAL RAINFALL ANALYSIS .....	2-38
2.6.1	Fifty-Year Data Analysis .....	2-38
2.6.2	Design Storms .....	2-38



2.6.3	Typical Year Rainfall .....	2-41
2.7	SUMMARY .....	2-41
<b>3</b>	<b>SECTION THREE – COLLECTION SYSTEM MODEL DEVELOPMENT .....</b>	<b>3-1</b>
3.1	COMBINED SEWER SYSTEM MODEL DEVELOPMENT AND CALIBRATION .....	3-1
3.1.1	Introduction .....	3-1
3.1.2	Combined Sewer System Model .....	3-2
3.1.3	Simulation of Overland Flow .....	3-3
3.1.4	Simulation of Flow through Trunk Sewers to CSO Diversion Structures .....	3-3
3.1.5	Simulation of Flow Through Interceptor System .....	3-4
3.1.6	Runoff Block Input Data .....	3-4
3.1.7	Rainfall Data .....	3-5
3.1.8	Subcatchment Areas .....	3-5
3.1.9	Percent Impervious .....	3-9
3.1.9.1	Subcatchment Widths .....	3-14
3.1.9.2	Overland Slope .....	3-14
3.1.9.3	Depression Storage .....	3-14
3.1.9.4	Mannings' Roughness Coefficient .....	3-18
3.1.9.5	Soil Infiltration .....	3-18
3.1.10	Dry Weather Flow .....	3-22
3.1.11	Trunk Sewer and Main Interceptor Data for Model .....	3-26
3.1.12	Other Model Data .....	3-26
3.1.12.1	Computational Time Step .....	3-26
3.2	CS MODEL CALIBRATION AND VERIFICATION .....	3-27
3.2.1	Objectives .....	3-27
3.2.2	Model Development .....	3-27
3.2.2.1	Model Input Data .....	3-27
3.2.2.2	Flow Monitoring Program .....	3-27
3.2.2.3	Rainfall Data .....	3-28
3.2.2.4	Model Update .....	3-29
3.2.3	Calibration and Verification Objectives .....	3-30
3.2.3.1	Dry Weather Calibration .....	3-30
3.2.3.2	Wet Weather Calibration and Verification Summary .....	3-32
3.3	CS MODEL CALIBRATION .....	3-33
3.4	CS MODEL VERIFICATION .....	3-38
<b>4</b>	<b>SECTION FOUR – RECEIVING STREAM MODEL DEVELOPMENT .....</b>	<b>4-1</b>
4.1	INTRODUCTION .....	4-1

4.2	RIVER MODEL CALIBRATION AND VALIDATION.....	4-3
4.3	APPLICATION TO CHARACTERIZE BASELINE CONDITIONS.....	4-3
4.3.1	River Sensitivity to Sources of E. coli.....	4-7
<b>5</b>	<b>SECTION FIVE – PUBLIC PARTICIPATION.....</b>	<b>5-1</b>
5.1	INTRODUCTION.....	5-1
5.2	STAKEHOLDER IDENTIFICATION.....	5-1
5.3	PUBLIC PARTICIPATION PROCESS.....	5-1
5.3.1	City Involvement.....	5-3
5.3.2	Mayor’s Appointment of Citizen’s Advisory Committee (CAC) (2 Phases).....	5-4
5.4	PUBLIC MEETINGS AND PUBLIC EDUCATION.....	5-10
5.5	COMMUNITY NOTIFICATION PROGRAM.....	5-10
5.5.1	Signage.....	5-11
5.5.2	Notification.....	5-11
5.6	PRINT AND ELECTRONIC MEDIA COVERAGE.....	5-11
<b>6</b>	<b>SECTION SIX – DEVELOPMENT OF CSO CONTROL ALTERNATIVES.....</b>	<b>6-1</b>
6.1	INTRODUCTION.....	6-1
6.2	GOALS OF THE CSO CONTROL PLAN.....	6-1
6.3	EVALUATION FACTORS.....	6-2
6.3.1	Cost Effectiveness.....	6-2
6.3.2	Regulatory Compliance.....	6-3
6.3.3	Non-Monetary Factors.....	6-3
6.3.4	Community and Technical Committee Input.....	6-4
6.4	INITIAL SCREENING OF CSO CONTROL TECHNOLOGIES.....	6-5
6.4.1	Collection System Control.....	6-5
6.4.1.1	Inflow/Infiltration Reduction.....	6-5
6.4.1.2	Real Time Control.....	6-6
6.4.1.3	Sewer Separation.....	6-7
6.4.1.4	Outfall Consolidation/Relocation.....	6-8
6.4.2	Storage Technologies.....	6-8
6.4.2.1	Storm Water Storage ahead of Combined System.....	6-8
6.4.2.2	In-line Storage.....	6-9
6.4.2.3	Off-line Storage.....	6-12
6.4.3	Treatment and Floatables Controls Technologies.....	6-13
6.4.3.1	Screens.....	6-14
6.4.3.2	Netting Systems.....	6-18
6.4.3.3	Floatables Source Control.....	6-20

6.4.4	Summary of Screening Process of CSO Control Technologies.....	6-21
6.5	DEVELOPMENT OF CONTROL ALTERNATIVES.....	6-26
6.5.1	In-Depth Evaluation of Control Alternatives.....	6-26
6.5.1.1	Main Lift Station and WWTP Upgrade.....	6-26
6.5.1.2	In-Line Storage Alternatives.....	6-26
6.5.1.3	Off-Line Storage Alternatives.....	6-27
6.5.2	Description of Comprehensive Alternatives Developed.....	6-28
6.5.3	Common Alternative Elements.....	6-30
6.5.3.1	Floatable Controls at CSO's to remain.....	6-30
6.5.3.2	Back-Up Weir Structure at Hulman/Idaho and Floatables Control.....	6-30
6.5.3.3	Interim Plant Upgrades – Piping/Hydraulics and Chlorine Contact Tank Upgrades.....	6-31
6.5.3.4	Rehabilitation of North Hulman Street Sewer and Weir at 15 <sup>th</sup> and Ohio.....	6-31
6.5.3.5	Large Diameter Pipe Rehabilitation.....	6-31
6.5.3.6	New Headworks Facility at Wastewater Treatment Facility.....	6-32
6.5.3.7	Separation of East area of basin 003 and west end of 009.....	6-32
6.5.3.8	Wastewater Treatment Plant Improvements Phases II and III.....	6-33
6.5.3.9	Combined Sewer Inspection and Cleaning.....	6-36
6.5.3.10	Wellhead Protection Zone.....	6-37
6.6	EVALUATION OF COMPREHENSIVE SYSTEM-WIDE ALTERNATIVES.....	6-37
6.6.1	Initial Screening (Screen from 1-7 to 1, 5A, 5B and 7).....	6-37
6.6.2	Final Screening and Evaluation (Screen from 1, 5A, 5B and 7 to 7, 11 and Hybrid).....	6-45
6.7	GREEN INFRASTRUCTURE OPPORTUNITIES.....	6-46
6.8	CONCLUSION.....	6-48
6.8.1	Alternatives Screened for Detailed Evaluation.....	6-49
6.8.1.1	Alternative 7B.....	6-49
6.8.1.2	Alternative 11.....	6-49
6.8.1.3	Alternative “Hybrid”.....	6-50
<b>7</b>	<b>SECTION SEVEN – COST PERFORMANCE CONSIDERATIONS.....</b>	<b>7-1</b>
7.1	INTRODUCTION.....	7-1
7.2	COST PERFORMANCE CURVE ANALYSIS.....	7-2
7.2.1	Unit Cost Development.....	7-2
7.2.1.1	Conveyance Unit Costs.....	7-2
7.2.1.2	CSO Storage Facilities.....	7-3
7.2.1.3	Operation, Maintenance and Replacement Costs.....	7-4
7.2.2	Cost for Each Control Alternative.....	7-6
7.2.3	.....	7-15
7.2.4	Collection System Model Results.....	7-63

7.2.5	River Model Results .....	7-67
7.2.6	Comparison to Single Sample Maximum Criterion.....	7-68
7.2.7	Cost Performance Curve.....	7-74
7.2.8	Priority Area Assessment .....	7-77
7.3	SUMMARY OF ALTERNATIVE DEVELOPMENT.....	7-78
7.4.1	Cost Effectiveness.....	7-80
7.4.2	Non-Monetary Factors.....	7-81
7.4.3	Meeting the Goals of the CSO Control Plan .....	7-82
7.5	PREFERRED ALTERNATIVE.....	7-84
<b>8</b>	<b>SECTION EIGHT – AFFORDABILITY AND FINANCIAL CAPABILITY ASSESSMENT .....</b>	<b>8-1</b>
8.1	INTRODUCTION .....	8-1
8.2	DETERMINING WHAT RESIDENTS CAN AFFORD.....	8-2
8.2.1	Phase 1: Calculation of the Wastewater Cost Per Household Indicator .....	8-2
8.2.1.1	Median Household Income .....	8-6
8.2.1.2	Cost Per Household .....	8-7
8.2.2	Phase 2: Socio-Economic Indicators Matrix (SEIM) .....	8-9
8.2.2.1	Bond Rating .....	8-10
8.2.2.2	Overall Net Debt as a Percent of Full Market Property Value .....	8-11
8.2.2.3	Unemployment Rate.....	8-11
8.2.2.4	Median Household Income .....	8-11
8.2.2.5	Property Tax Revenues as a Percent of Full Market Property Value.....	8-12
8.2.2.6	Property Tax Collection Rate.....	8-12
8.2.2.7	Analyzing Permittees Socio-Economic Indicators.....	8-12
8.2.3	Financial Capability Assessment Summary.....	8-13
8.3	FINANCIAL CONSIDERATION ON THE DEVELOPMENT OF THE CSOLTCP IMPLEMENTATION SCHEDULE... ..	8-14
8.3.1	Environmental .....	8-14
8.3.2	New Technology Considerations .....	8-14
8.3.3	Other Major Sewer and Wastewater Treatment Facility Planned Improvements .....	8-14
8.3.4	Available Low Interest Loan or Grant Funding .....	8-14
8.3.5	Public Acceptance and Affordability .....	8-15
8.3.6	Recommended Length of the Implementation Schedule for the Terre haute CSOLTCP .....	8-15
<b>9</b>	<b>SECTION NINE – USE ATTAINABILITY ANALYSIS .....</b>	<b>9-1</b>
<b>10</b>	<b>SECTION TEN – RECOMMENDED PLAN.....</b>	<b>10-1</b>
10.1	INTRODUCTION AND RECOMMENDED PLAN HISTORY .....	10-1
10.2	RECOMMENDED PLAN DESCRIPTION.....	10-3

10.3	PHASES OF THE SELECTED PLAN.....	10-8
10.3.1	General Phasing Considerations .....	10-8
10.3.2	Description of Phases .....	10-10
10.4	POST CONSTRUCTION MONITORING PROGRAM .....	10-13
<b>11</b>	<b>SECTION ELEVEN – REVISIONS TO CSOOP PLAN .....</b>	<b>11-1</b>
11.1	REVISIONS REQUIRED.....	11-1

## List of Appendices

Appendix A	Glossary
Appendix B	References
Appendix 1-1	City of Terre Haute NPDES Permit
Appendix 2-1	Terre Haute 2007 Wet Weather Sampling Program Results Summary
Appendix 2-2	“Typical” Period Analysis for the City of Terre Haute
Appendix 3-1	CSO Control Program Model Calibration and Verification Report
Appendix 4-1	Wabash River Model Calibration
Appendix 4-2	Wabash River Model Baseline “Typical Year” Scenario
Appendix 5-1	Media Coverage of the CSO LTCP
Appendix 5-2	Agendas and Presentations for Public Meetings
Appendix 6-1	Technology Screening Process
Appendix 6-2	Large Diameter Rehabilitation
Appendix 6-3	Long Term Control Plan Alternative Screening
Appendix 6-4	Green Infrastructure Evaluation of Terre Haute CSO 009 Drainage Basin
Appendix 7-1	Unit Cost Reference Information
Appendix 7-2	Operations and Maintenance Cost Detail
Appendix 8-1	Rate Consultant Information

## List of Tables

Table No.	Title of Table	Page No.
2.2-1	City of Terre Haute CSO Service Areas	2-9
2.2-2	CSO Diversion structure Descriptions	2-13
2.3-3	Wastewater Treatment Facility Capacities	2-15
2.3-4	Terre Haute WWTF – NPDES Permit Limits	2-16
2.3-5	WWTF Influent and Effluent Loadings, June 2008 through June 2010	2-17
2.2-5	Options for Implementation of Nine Minimum Controls	2-23
2.4-1	Frequency of <i>E. coli</i> Single Sample Maximum Water Quality Standard Compliance During Wet and Dry Periods	2-30
2.4-2	Frequency of Dissolved Oxygen Water Quality Standard Compliance During Wet and Dry Periods	2-32
2.4-3	Summary of Heavy Metals Data by Reach Measured in the Wabash River Near the City of Terre Haute	2-37
2.6-1	Characteristics of Selected Storms	2-39
2.6-2	Rainfall Hyetograph Data	2-40
3.1-1	Subcatchment Area Land Use	3-6
3.1-2	Assumed Values of Percent Imperviousness	3-9
3.1-3	Rain Leader Estimate	3-10
3.1-4	Percent Imperviousness	3-11
3.1-5	Model Input Data	3-15
3.1-6	Green-Ampt parameters	3-19
3.1-7	Dry Weather Flow Estimation	3-22
3.2-1	Flow monitoring Locations	3-27
3.2-2	2005 Monitored Rainfall Events	3-29
3.2-3	Dry Weather Flow Inputs	3-30
3.3-1	Initial Model Data	3-34
3.3-2	Final Model Data	3-36
4.3-1	Overflow Characteristics by CSO for a Typical Year	4-4
4.3-2	Hours Exceeding Indiana's <i>E. coli</i> Single Sample Water Quality Standard Criterion During the Recreation Season (5,136 hours)	4-7

<b>Table No.</b>	<b>Title of Table</b>	<b>Page No.</b>
6.4-1	Initial CSO Technology Screening	6-23
6.4-2	Consideration of Technologies	6-25
6.5-1	Preliminary Opinion of Construction Cost Summary - Initial Alternatives Sized for 4 Overflows per Year	6-38
6.5-2	Preliminary Opinion of Operations and Maintenance Costs Summary – Initial Alternatives Sized for 4 Overflows per Year	6-38
6.5-3	Evaluation Criteria Weighting	6-39
6.5-4	Terre Haute CSO LTCP Alternative Screening Alternative Scoring/Ranking	6-41
7.2-1	Annual Operations and Maintenance Costs for each Alternative	7-5
7.2-2	Total Project Costs for Each Alternative	7-5
7.2-3	Present Worth of Total Project Costs for Each Alternative	7-5
7.2-4	Opinion of Probably Construction Cost – Alternative 7B	7-7
7.2-5	Opinion of Probably Construction Cost – Alternative 11	7-20
7.2-6	Opinion of Probably Construction Cost – Alternative Hybrid	7-43
7.2-7	Total Number of Overflows in a Typical Year for Each Level of Control of Final Alternatives	7-64
7.2-8	Total Annual Volume (Million Gallons) in a Typical Year for Each Level of Control of Final Alternatives	7-65
7.2-9	Annual CSO Overflow Volume (MG) During Recreation Season (Apr. – Oct.) Based on Terre Haute 10-year Simulation Period	4-35
7.2-10	Total Hours of Exceedances of Indiana’s Single Sample Maximum E. coli Criterion in the Recreation Season of the Typical Year for Each Level of Control of Final Alternatives	4-35
8.2-1	Financial Impact Based on WWCPHI	8-3
8.2-2	2% Equivalent Affordable Capital Costs	8-4
8.2-3	Cost per Household Based on the Recommended Project	8-5
8.2-4	Median Household Income and Residential Indicator	8-7
8.2-5	Water Usage	8-8
8.2-6	Overall Net Debt as a Percentage of Market Value of Real Property for Terre Haute Sanitary District	8-11
8.2-7	Property Tax Revenue as a Percent of Full Market Property Value	8-12
8.2-8	Socio-Economic Indicators Matrix	8-13
8.2-9	Financial Capability Matrix	8-13
10.3-1	Implementation Schedule - Description of Phases	10-11



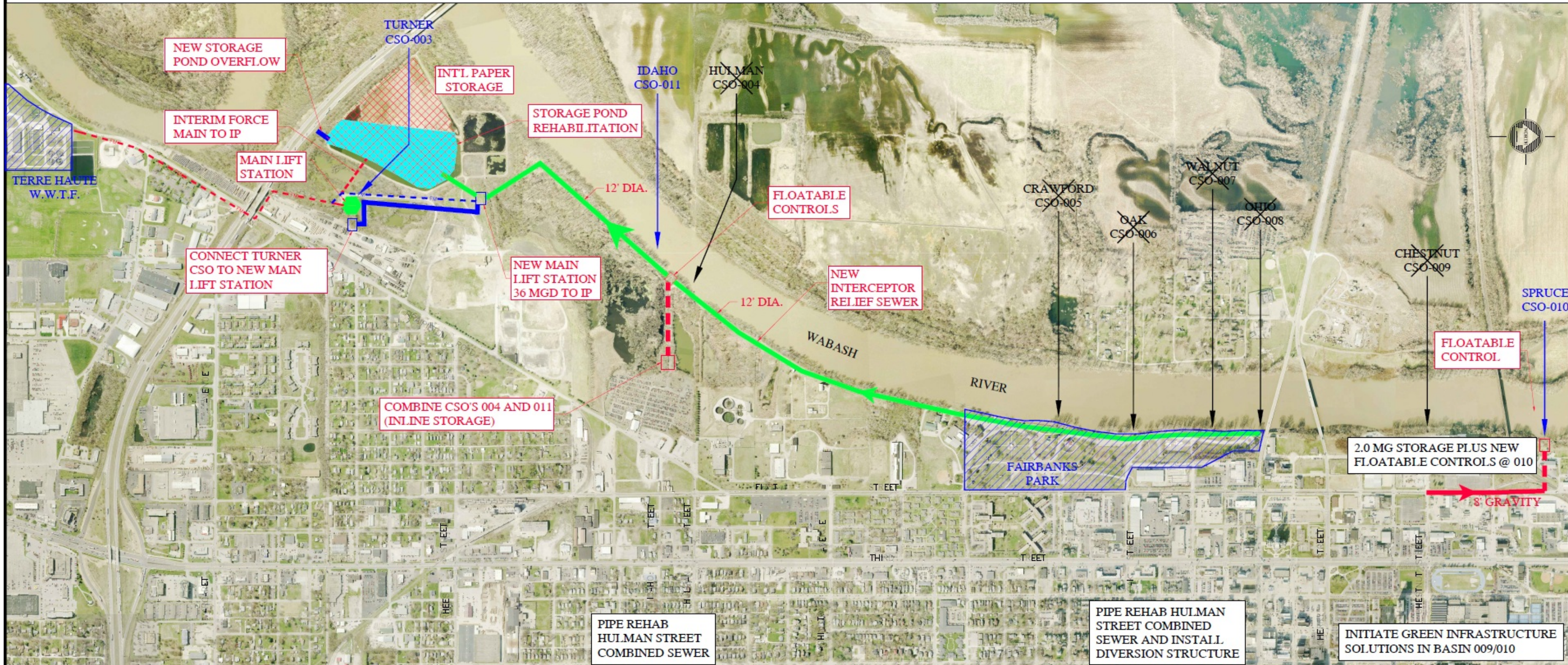
<b>Table No.</b>	<b>Title of Table</b>	<b>Page No.</b>
10.3-2	Implementation Schedule (20 Years)	10-12

## List of Figures



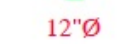



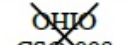
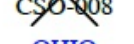
Figure No.	Title of Figure
ES-1	CSO Locations and Combined Sewer Area
ES-2	Recommended Plan
2.2-1	Wabash River Watershed
2.2-2A	Silver Carp Distribution in 2006
2.2-2B	Bighead Carp Distribution in 2006
2.2-3	Wabash River Watershed Features Near the City of Terre Haute
2.2-4	Land Cover in the Wabash River Watershed Near the City of Terre Haute
2.3-1	CSO Service Areas
2.3-2A to C	Trunk sewers and Interceptor
2.3-3	Wastewater Treatment Facility Schematic
2.4-1	Wet Weather Sampling Program
2.4-2	Box-and-whisker plot of wet and dry <i>E. coli</i> data in the Wabash River
2.4-3	Box-and-whisker plot of wet and dry dissolved oxygen data in the Wabash River
2.4-4	Box-and-whisker plot of wet and dry total suspended solids (TSS) data in the Wabash River
2.6-1	<i>Rainfall Hyetographs for Design Storms</i>
3.1-1	CSO Service Areas including Flow Meters and Rain Gauges
3.1-2A to E	Collection System Model Layout
4.1-1	River Model Extent and CSO Load Inputs
4.3-1	Annual <i>E. coli</i> Loads to the Wabash River by Source Type for a Typical Year
4.3-2	Downstream Profile of Exceedances of Indiana's Single Sample Maximum <i>E. coli</i> Criterion (235 cfu/100 mL).
4.3-3	Downstream Profile of Exceedances of Indiana's Single Sample Maximum <i>E. coli</i> Criterion (235 cfu/100 mL) with and without the City's CSOs
6.3-1A to B	Sewer Separation Schematics
6.3-2	Inflatable Dam
6.3-3	Typical Concrete Storage Tank
6.5-1	Alternative 1 – North Storage/International Paper Storage Option I

- 6.5-2 Alternative 5A – North Tunnel with Storage Tanks
- 6.5-3 Alternative 5B – North Tunnel with International Paper Storage
- 6.5-4 Alternative 7 – Tunnel to Main Lift Station
- 6.6-1 Impervious Surface (Green Infrastructure Opportunities) in CSO-009 Drainage Area.
- 6.8-1 Alternative 7B
- 6.8-2 Alternative 11
- 6.8-3 Alternative Hybrid
- 7.2-1 Total Annual CSO Volume in a Typical Year by Level of Control
- 7.2-2 Comparison of Compliance with Indiana’s Single Sample Maximum E. coli Criterion for Each Final Alternative Sized at 12 Overflows/Year
- 7.2-3 Comparison of Compliance with Indiana’s Single Sample Maximum E. coli Criterion for Different Levels of Control for Alternative 7b
- 7.2-4 Comparison of Compliance with Indiana’s Single Sample Maximum E. coli Criterion for Different Levels of Control for Alternative 11
- 7.2-5 Comparison of Compliance with Indiana’s Single Sample Maximum E. coli Criterion for Different Levels of Control for Hybrid Alternative
- 7.2-6 Comparison of Compliance with Indiana’s Single Sample Maximum E. coli Criterion for Different Levels of Control for Alternative 11 Considering All Bacteria Sources
- 7.2-7 Cost-Performance Analysis of CSO Control Alternatives Based on Water Quality Benefit at Fairbanks Park
- 7.2-8 Cost-Performance Analysis of CSO Control Alternatives Based on Water Quality Benefit Near the Waste Water Treatment Plant
- 7.2-9 E. coli Concentration Profile at Fairbanks Park During Events Remaining After Implementation of the Long Term Control Plan
- 10.1-1 International Paper Lagoon Site
- 10.3-1 Recommended Plan – Proposed Implementation

# Terre Haute CSO LTCP



**LEGEND**

-  RELIEF SEWER AND FLOW
-  EXISTING MAIN LIFT STATION
-  12"Ø RELIEF SEWER SIZE
-  NEW PUMP STATION OR STRUCTURE
-  NEW FORCE MAIN
-  EXISTING COMBINED SEWER OUTFALL
-  EXISTING CSO TO BE ELIMINATED
-  EXISTING CSO TO REMAIN (SOME REMAIN OPEN AT LESSER LEVELS OF CONTROL)

**TERRE HAUTE**  
A LEVEL ABOVE

**HANNUM, WAGLE & CLINE**  
engineering

Figure ES-2  
Recommended Plan